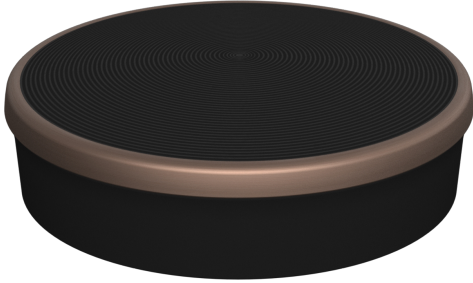


TWIST PAD FLEX®, BRUSHED BRONZE  
Z9801TWBY0



√ Twist Pad Flex® - An easy to spin dial for effortless control of your oven, hob, and coffee machine. Match your kitchen's aesthetic and gain effortless control of your appliances.

#### Features

##### Technical Data

Dimensions of the packed product (HxWxD): ..... 50 x 70 x 70 mm  
Pallet dimensions: ..... 85.0 x 80.0 x 120.0  
Standard number of units per pallet: ..... 900  
Net weight: ..... 0.1 kg  
Gross weight: ..... 0.1 kg  
EAN code: ..... 4242004269465



4 242004 269465